

WAPMAN

WSJ Archive and Purge Application

WAPMAN for EnterpriseOne has been developed to help JDEdwards EnterpriseOne customers to manage, archive and purge their PrintQueue data and related files.

In a typical EnterpriseOne environment users can run thousands of EnterpriseOne reports on a daily basis. The output generated is stored in two locations, a) in the WSJ (Work with Submitted Jobs) tables, and b) in the print queues folders on the enterprise servers. Typically the majority of the reports are not retained and usually they will be purged or deleted after a period of time. In some cases, users would like to retain the reports specific documents for future reference. This could be due to legal requirements or company policy. EnterpriseOne does not have standard tools to archive this kind of information, and in addition the standard purging processes delete all reports indiscriminately on the basis of the number of retention days specified in the standard purge process.

WAPMAN can help you implement a purge and archive policy for submitted jobs by providing you with a purge / archive application, an archived document browser and a viewer application.

Benefits WAPMAN

- Manage your WSJ/PrintQueue growth discriminately.
- Archives the E1 output documents to separate (user-defined) locations. (PDF, CSV, OSA)
- Schedule the archive / purge reports (Set it and Forget it)
- Improves performance in 'active' WSJ records by maintaining a small working set of reports in WSJ
- Use Archive Browse Application to find/view archived documents from within EnterpriseOne (no external viewer or application needed)

Features WAPMAN

- Create multiple archive / purge sets
- Schedule archive / purge sets separately
- Define retention policy at report /version level.
- Search and View Archived Documents from within EnterpriseOne. (no third party tool required)
- Use multiple destination locations (i.e. to secure documents by functionality)
- Archives PDF, CSV and OSA documents

Archive Set	Description	Program ID	Work Set ID	Time Updated	User ID	Date Updated
<input checked="" type="radio"/> DAILY_ARCHIVE	Daily General Archiving Set of Reports	PFZWA001	JDEWEB	122725	JDE	02/15/01
<input type="radio"/> DAILY_PURGE	Daily General Purge set of Reports	PFZWA001	JDEWEB	122800	JDE	02/15/01
<input type="radio"/> DISTRIBUTION_REPORT	Distribution Related Reports	PFZWA001	JDEWEB	122218	JDE	02/15/01
<input type="radio"/> FINANCIAL_REPORTS	Finance Related Reports archived in WAP_Fin	PFZWA001	JDEWEB	74002	JDE	02/10/01
<input type="radio"/> MANUFACTURING_REPORTS	Manufacturing Related Reports	PFZWA001	JDEWEB	122533	JDE	02/15/01
<input type="radio"/> MONTHLY_ARCHIVE	Monthly General Archiving Set of Reports	PFZWA001	JDEWEB	122800	JDE	02/15/01
<input type="radio"/> MONTHLY_PURGE	Monthly General Purge Set of Reports	PFZWA001	JDEWEB	122839	JDE	02/15/01
<input type="radio"/> PURGE_ALL	Purge All Archive Set - Use with Extreme Caution	PFZWA001	JDEWEB	75058	JDE	02/10/01
<input type="radio"/> WEEKLY_ARCHIVE	Weekly General Archiving Set of Reports	PFZWA001	JDEWEB	122704	JDE	02/15/01
<input type="radio"/> WEEKLY_PURGE	Weekly General Purge Set of Reports	PFZWA001	JDEWEB	122005	JDE	02/15/01

Fig.1: WAPMAN Archive and Purge Sets

Archive Purge Sets

Archive and Purge sets are used to define and group which reports are archived and /or purged together. Each set can be managed and maintained separately. This allows you to define different archiving and purging policies for multiple predefined sets of reports/versions.

The set can be scheduled for archiving/purging using the EnterpriseOne Job Scheduler or a third-party scheduler.

It is possible to configure the following options per set, report, report/version level and even per user:

- Archive and/or Purge.
- Number of retention days.
- Archive location.

Report	Report Name	Version	Version Title	Retention Days	Author
1.00 P01201	NEW LEAD PAY ADDRESS	NLS	NEW LEAD PAY ADDRESS	1	JDE
2.00 S00801	General Ledger Foot	NLS	General Ledger Foot	99	JDE
2.00 R04311	Manual Payment Journal	NLS	Manual Payment Journal	99	JDE
4.00 R04121	Open and Forward Upload	NLS	Open and Forward Upload	99	JDE
5.00 R04013	Update Payment Information	NLS	Update Payment Information	99	JDE
6.00 S00813	Purge Aging Tables	NLS	Purge Aging Tables	99	JDE
7.00 R04013	Create Payment Control Groups	NLS	Create Payment Control Groups	99	JDE

Fig.2: WAPMAN Archive and Purge Sets Detail

Archived Documents Viewer

WAPMAN has its own viewer application which provides end-users with access to the archived WSJ data. The viewer contains a number of search options which simplifies and speeds up the process of finding archived reports. Processing options can be configured to ensure that users are restricted to viewing their own archived reports or all reports in a specific archive location..

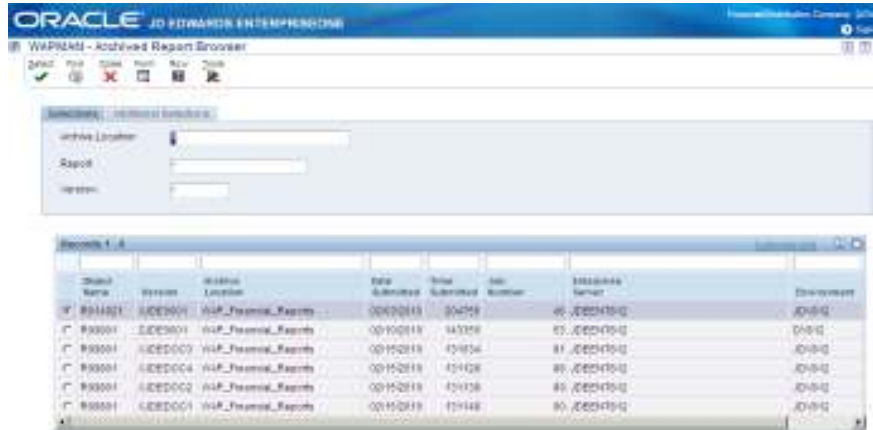


Fig3: Browse Archived Documents

The detail view of the documents allows the end user to save, print or only view the document.

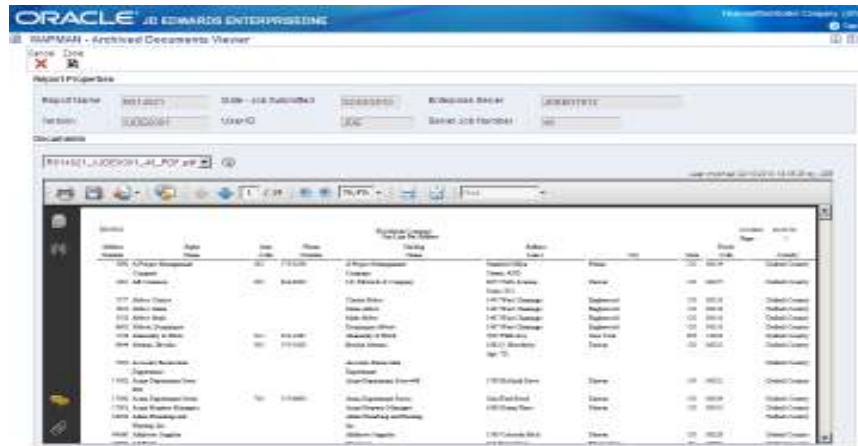


Fig4: View, Print or Save the archived document from within E1



Van Weedestraat 3
Postbus 215
3760 AE Soest
The Netherlands

www.forzaconsulting.nl
www.forzaconsulting.be

email: cnc@forzaconsulting.nl



Web Demo of WAPMAN

At Forza Consulting we would be delighted to show you the possibilities of WAPMAN in a web demo. In this web demo we will show you all the functions and features of WAPMAN. We will also explain how WAPMAN can be configured and implemented to help your organization get maximum ROI using this powerful tool.

Forza Consulting has a 24x7 helpdesk that can help you with any inquiries concerning WAPMAN.